

California



INNOVATIVE TECHNOLOGY

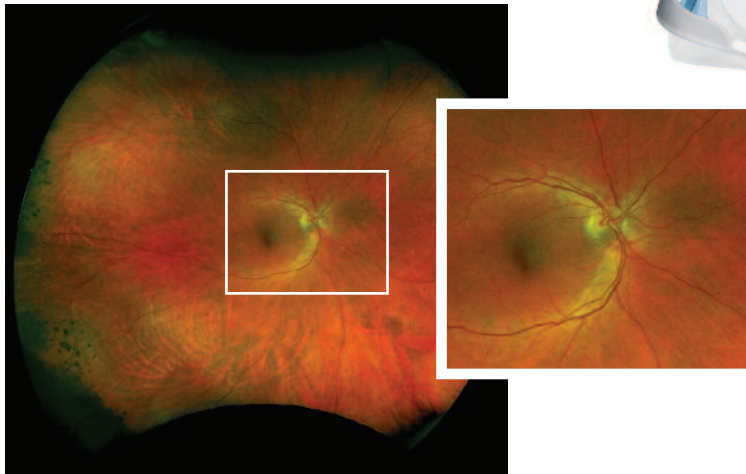
Only Optos ultra-widefield (UWF) technology can produce a 200° single-capture retinal image in less than ½ second.

California is available in three models with six imaging modalities to meet the needs and budget of every practice:

- Color
- Sensory (red-free)
- Choroidal
- Autofluorescence with green laser (*af*)
- Fluorescein angiography (*fa*)
- ICG angiography (*icg*)

optomap images are presented in a consistent geometry that accurately represents anatomical features across the retina. Automatic image registration enables pixel to pixel comparisons of images across modalities and from visit to visit.

California's innovative optical design provides high resolution images showing fine detail whether viewing the entire retina or zoomed in to inspect macula, optic nerve head, or small pathology.

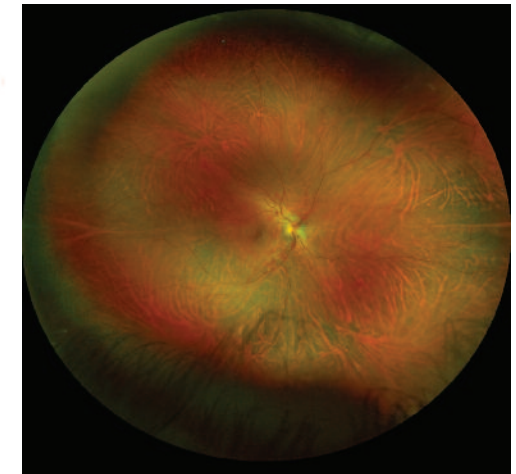


optomap image showing peripheral chorioretinal scars.

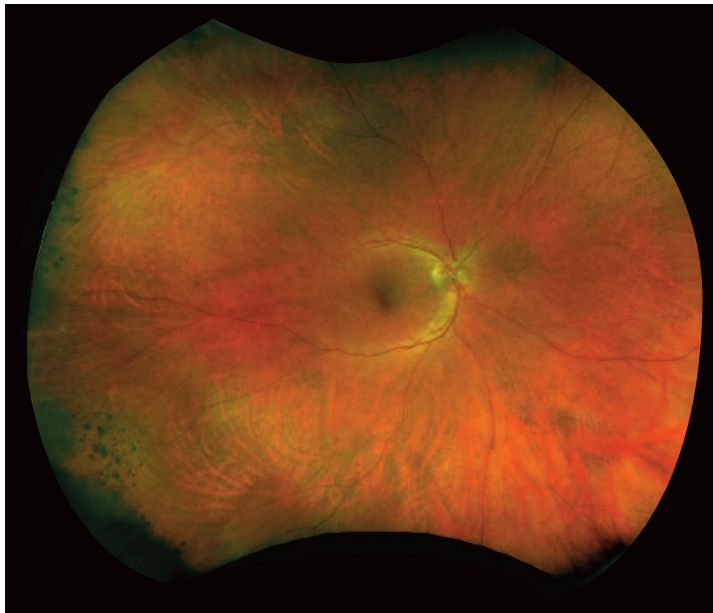


FEATURES AND BENEFITS

- Non-mydratric imaging of the retina in less than ½ second saves time and helps improve clinic flow.
- cSLO technology images through most cataracts and small pupils (2 mm).
- 3-in-1 Color Depth Imaging™ provides important clinical data from the retinal surface through the choroid.
- Green laser autofluorescence minimizes patient exposure to blue light and shows macula and optic nerve head detail.
- Image overlay tool facilitates comparison of images in different image modes and from visit to visit.
- Browser-based image review offers easy, HIPAA-compliant access to data from any connected PC or tablet.
- Distance (mm) and area (mm²) measurements provide objective assessment of change over time.
- Interweaved angiography saves time by enabling capture of *fa* and *icg* in the same session.
- Stereo disc imaging allows assessment of the optic nerve to diagnose and follow the progression of glaucoma.
- Auto-montage combines an **optomap** series into a single image showing up to 220° (97%) of the retina.



Auto-montage image of a healthy retina.



optomap *color*

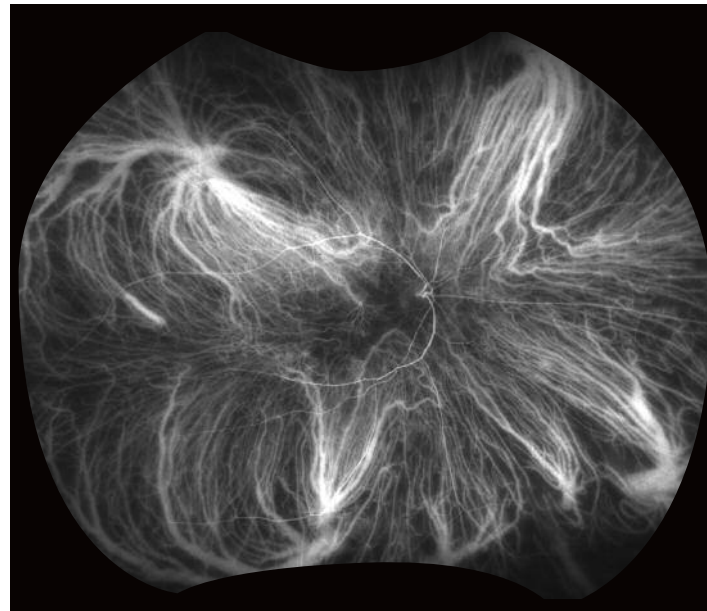


optomap *af*



optomap *fa*

Courtesy of Prof Paulo Stanga



optomap *icg*

Courtesy of SriniVas Satta, MD

*"The complete, clear picture provided by **optomap** makes us faster and more effective in our examinations and patient discussions. This has enabled us to see approximately five additional patients per day, which more than covers the monthly equipment cost."*

V.N. Batra, MD
San Leandro, CA, US

*"**optomap** is now as much a part of every exam as measuring intraocular pressure. The ability to see so far out into the periphery means earlier detection of sight and life threatening issues which translates into a higher probability of successful treatments."*

D. Katsev, MD
Santa Barbara, CA, US

*"The reality is, before **optomap** we didn't know how much pathology was out there in the retina. The multi-modality California device has become the standard of care for detection and management of diabetic retinopathy, AMD, and other conditions. Optos imaging captures virtually the entire retina in one shot - it doesn't get much better than that!"*

Srinivas Satta, MD
Los Angeles, CA, US

*"I can see no reason why anyone would not have the (**optomap**) technology."*

S. Segal, MD
Houston, TX, US

TECHNICAL SPECIFICATIONS

TRADE NAME	California		
MODEL NAME	P200DTx <i>af</i> , P200DTx <i>fa</i> , P200DTx <i>icg</i>		
MODEL NUMBER	A10650		
IMAGING MODALITIES	P200DTx <i>af</i>	P200DTx <i>fa</i>	P200DTx <i>icg</i>
Color	X	X	X
Sensory (red-free)	X	X	X
Choroidal	X	X	X
Autofluorescence (<i>af</i>)	X	X	X
Fluorescein Angiography (<i>fa</i>)		X	X
ICG Angiography (<i>icg</i>)			X
COLORS	White with Blue Trim	White with Grey Trim	White with Aqua Trim
RESOLUTION	optomap: 20 µm optomap <i>plus</i> : 14 µm		
LASER WAVELENGTHS	Red laser: 635 nm Green laser: 532 nm (for <i>af</i>) Blue laser: 488 nm (for <i>fa</i>) Infrared laser: 802 nm (for <i>icg</i>)		
EXPOSURE TIME	Less than 0.4 seconds		
FOOTPRINT	Width: 550 mm / 22 inches Depth: 550 mm / 22 inches including chinrest Height: 608-632 mm / 24-25 inches		
WEIGHT	34 kg / 75 lbs		
TABLE SPACE REQUIREMENTS (not including wheel position)	Width: 887 mm / 35 in Depth: 600 mm / 24 in		
LASER CLASS	Laser safety class-1 following EN60825-1: 2007 and 21 CFR1040.10 and 1040.11		
SYSTEM VOLTAGE	US: 100-120V at 50/60hz, 3A EU/AU: 200-240V at 50/60Hz, 1.5A		
POWER CONSUMPTION	300VA		
COMMUNICATION PROTOCOL	DICOM Compatible		



More than 500 published and ongoing clinical trials as well as thousands of case studies and testimonials show the long-term value of **optomap** imaging in diagnosis, treatment planning and patient engagement.

NOTE: Specifications are subject to change without notice.



Optos plc
Queensferry House
Carnegie Campus
Enterprise Way
Dunfermline, Fife
Scotland KY11 8GR
Tel: +44 (0)1383 843350
ics@optos.com

Optos, Inc.
500 Nickerson Road
Suite 201
Marlborough, MA 01752
USA
Call Toll-free (US & Canada): 800-854-3039
Outside of the US: 508 787 1400
usinfo@optos.com

Optos Australia
10 Myer Court
Beverly
South Australia 5009
Tel: +61 8 8444 6500
auinfo@optos.com

