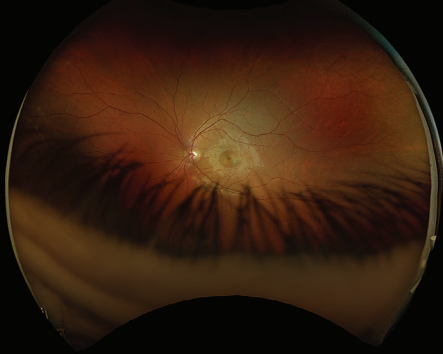


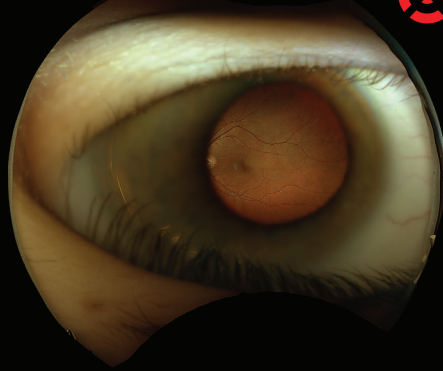
# Troubleshooting Image Quality

**Too Much Eyelid**



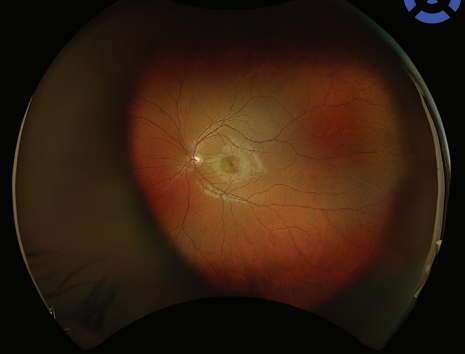
Have patient open both eyes as wide as possible. May need to raise table height.

**Too Close**



Patient too close, the target is red. Position patient until target turns green.

**Too Far Out**



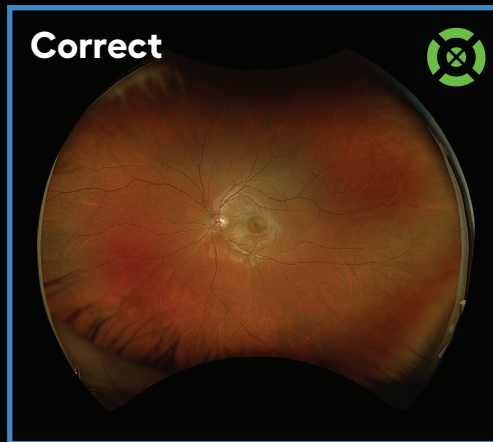
Patient too far out, target is blue. Position patient until target turns green.

**Blink**



Have the patient keep both eyes open as wide as possible.

**Correct**



This is a good image.

**Dust**



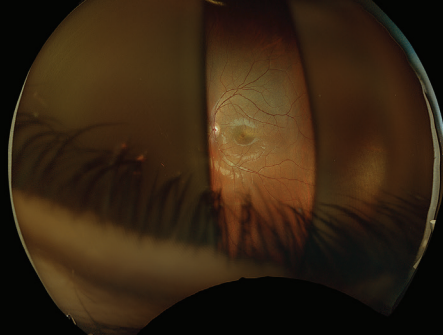
Dust has accumulated on the main mirror. Clean mirror per protocol.

**Facepad**



Patient nose is pressed against facepad. Turn patient's head slightly to the side.

**Movement**



Patient moved or pupil is not centered. Position patient so the target is in the center of the pupil.

**Reflex**



Patient is too close or not centered. Reimage.

