

When George was referred to Albert Morier, OD by his primary care physician (PCP), he informed the doctor that, in addition to his PCP's concern about monitoring any diabetic progression, an ophthalmologist had previously noted, and followed, a freckle on his retina. When a patient presents with a pre-existing medical condition, especially diabetes, dilation is considered the standard of care for treatment, with **optomap** imaging being utilized as complementary to the dilation. However, Dr. Morier found that George, did not dilate well so he sent him to his primary office, Consumer Optical in Schenectady, NY, where he could be imaged with **optomap**.

When Dr. Morier reviewed George's **optomap** image, he noted that in addition to trace diabetic retinopathy, there appeared to be a large lesion OS. Utilizing 3-in-1 color depth imaging which allows for separation in a color **optomap** image, Dr. Morier observed that the "freckle" was more likely a lesion, as it clearly extended beyond the choroid into the retina. Dr. Morier immediately sent George to a retina specialist who confirmed that the "freckle" was suspicious enough to send George to Massachusetts General Hospital for further assessment. There the lesion was confirmed to be a melanoma and treatment was started.

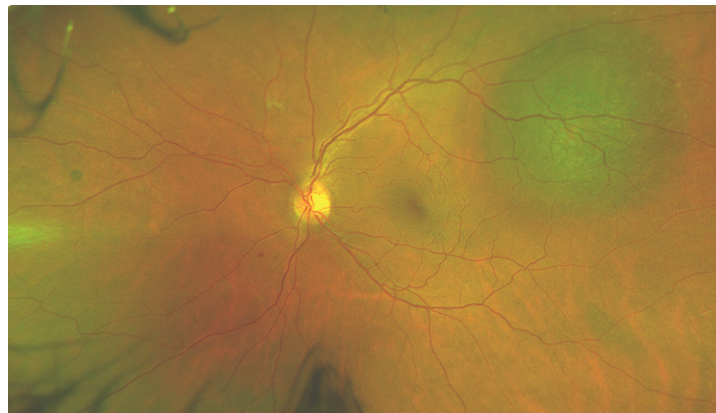
"Use of **optomap** probably saved George's life," said Dr. Morier. He added that stories, such as George's, are why he is very pleased to have invested in the **optomap** technology.

Dr. Morier has seen numerous cases where asymptomatic patients came in for routine eye exams and because of **optomap**, other disease or ocular pathologies were discovered.

He explained that because **optomap** is the only ultra-widefield retinal image that can capture 200° or 82% of the retina in a single image capture, many sight or life-threatening diseases are discovered earlier expediting critical treatment.

*"While patient education, ease-of-use and other aspects of the technology are extraordinary, " Dr. Morier stressed, "It is knowing that likely I will not have missed something with the ultra-widefield view that **optomap** provides and that allows me to sleep better. It is really this that matters - quality of care – and this gives me peace of mind."*

Albert Morier, OD
Consumer Optical
Schenectady, NY



optomap image capturing the suspicious lesion which turned out to be melanoma