

*California*



## Innovative Technology

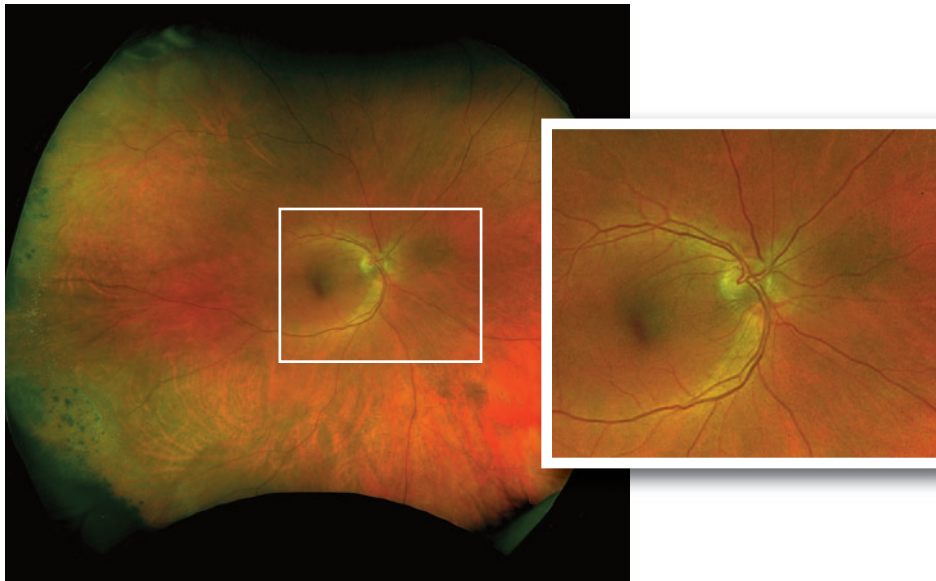
*California*

*California* was designed for medical imaging and is available in three models to meet the needs and budget of every practice. *California* produces a 200°, single-capture retinal image of unrivaled clarity in less than ½ second and is changing management of diseases including DR, AMD, and uveitis.

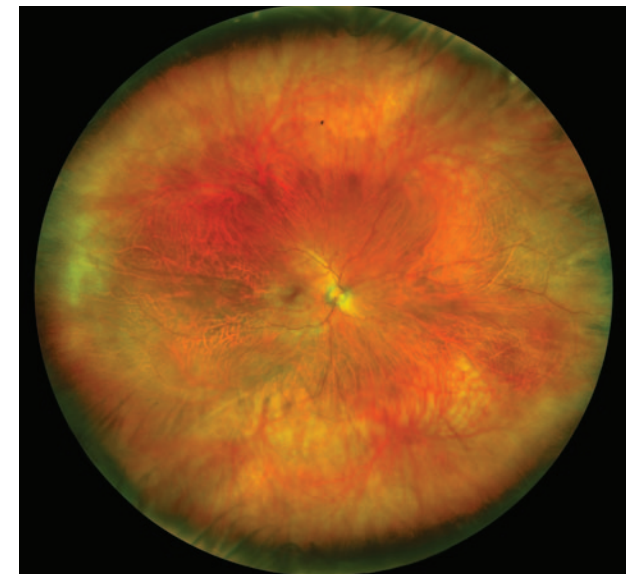
Available imaging modalities are: color, red-free, choroidal, autofluorescence, FA, and ICGA.

**optomap**® ultra-widefield images are presented in a consistent geometry so areas of interest can be accurately measured anywhere on the retina. Automatic image registration enables pixel to pixel comparisons of images across modalities and from visit to visit.

*California*'s patented optical design provides high resolution images showing fine detail whether viewing the entire retina or zoomed in to inspect macula, optic nerve head, or small pathology.



optomap image showing peripheral chorioretinal scars



Auto-montage image of a healthy retina



optomap *color*

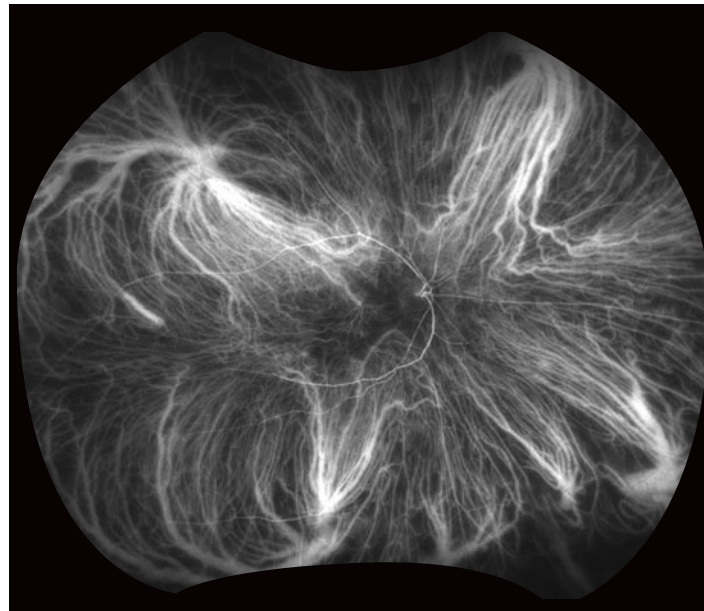


optomap *af*



optomap *fa*

Courtesy of Prof Paulo Stanga



optomap *icg*

Courtesy of SriniVas Sadda, MD

*"The complete, clear picture provided by **optomap** makes us faster and more effective in our examinations and patient discussions. This has enabled us to see approximately five additional patients per day, which more than covers the monthly equipment cost."*

**V.N. Batra, MD**  
San Leandro, CA, US

*"**optomap** is now as much a part of every exam as measuring intraocular pressure. The ability to see so far out into the periphery means earlier detection of sight and life threatening issues which translates into a higher probability of successful treatments."*

**D. Katsev, MD**  
Santa Barbara, CA, US

*"The reality is, before **optomap** we didn't know how much pathology was out there in the retina. The multi-modality California device has become the standard of care for detection and management of diabetic retinopathy, AMD, and other conditions. Optos imaging captures virtually the entire retina in one shot - it doesn't get much better than that!"*

**Srinivas Sadda, MD**  
Los Angeles, CA, US

*"I can see no reason why anyone would not have the (**optomap**) technology."*

**S. Segal, MD**  
Houston, TX, US

## Unique Features

- Non-mydriatic imaging of the retina in less than ½ second saves time and helps improve clinic flow
- cSLO technology images through most cataracts and small pupils (2 mm)
- 3-in-1 Color Depth Imaging™ provides important clinical data from the retinal surface through the choroid
- Green laser autofluorescence shows macula and optic nerve head detail
- Image overlay tool facilitates comparison of images in different image modes and from visit to visit
- Optos *Advance* Image Management software streamlines image review and consultations
- DICOM compatible software supports compliance with the Code of Federal Regulations <sup>1,2</sup>
- Distance (mm) and area (mm<sup>2</sup>) measurements provide objective assessment of change over time
- Interweaved angiography saves time by enabling capture of FA and ICG in the same session
- Stereo disc imaging allows assessment of the optic nerve to diagnose and follow the progression of glaucoma
- Auto-montage combines an **optomap** series into a single image showing up to 220° (97%) of the retina

<sup>1</sup> All Covered Entities must securely backup 'retrievable exact copies of ePHI' (CFR 164.308 (7)(ii)(A))

<sup>2</sup> All Data must be backed up off site. HIPAA final security rule (CFR 164.308(a)(7)).

## Technical specifications

TRADE NAME	California		
MODEL NAME / NUMBER	P200DTx / A10650		
CONFIGURATION NAME	California <i>rg</i>	California <i>fa</i>	California <i>icg</i>
			
<b>optomap UWF Imaging</b>			
<b>IMAGING MODALITIES</b>			
Color	X	X	X
Sensory (red-free)	X	X	X
Choroidal	X	X	X
Autofluorescence	X	X	X
Fluorescein Angiography		X	X
ICG Angiography			X
<b>COLORS</b>	White with Blue	White with Gray	White with Aqua
<b>RESOLUTION</b>	optomap: 20 µm, optomap <i>plus</i> : 14 µm		
<b>LASER WAVELENGTHS</b>	Red laser: 635 nm Green laser: 532 nm (for AF) Blue laser: 488 nm (for FA) Infrared laser: 802 nm (for ICG)		
<b>EXPOSURE TIME</b>	Less than 0.4 seconds		
<b>System</b>			
<b>FOOTPRINT</b>	Width: 550 mm / 22 in Depth: 550 mm / 22 in including chinrest Height: 608-632 mm / 24-25 in		
<b>WEIGHT</b>	34 kg / 75 lbs		
<b>TABLE SPACE REQUIREMENTS (not including wheel position)</b>	Width: 887 mm / 35 in Depth: 600 mm / 24 in Height: 725 to 1205 mm / 29 - 48 in		
<b>LASER CLASS</b>	Laser safety class-1 following EN60825-1: 2007 and 21 CFR1040.10 and 1040.11		
<b>SYSTEM VOLTAGE</b>	100-240Vac, 50/60Hz		
<b>POWER CONSUMPTION</b>	300VA		
<b>COMMUNICATION PROTOCOL</b>	DICOM Compatible		

NOTE: Specifications are subject to change without notice.



**Optos plc**  
Queensferry House  
Carnegie Campus  
Enterprise Way  
Dunfermline, Fife  
Scotland KY11 8GR  
Tel: +44 (0)1383 843350  
ics@optos.com

**Optos, Inc.**  
500 Nickerson Road  
Suite 201  
Marlborough, MA 01752  
USA  
Tel: 800 854 3039  
Tel: 508 787 1400  
usinfo@optos.com

**Optos Australia**  
10 Myer Court  
Beverly  
South Australia 5009  
Tel: +61 8 8444 6500  
auinfo@optos.com

