

California



INNOVATIVE TECHNOLOGY

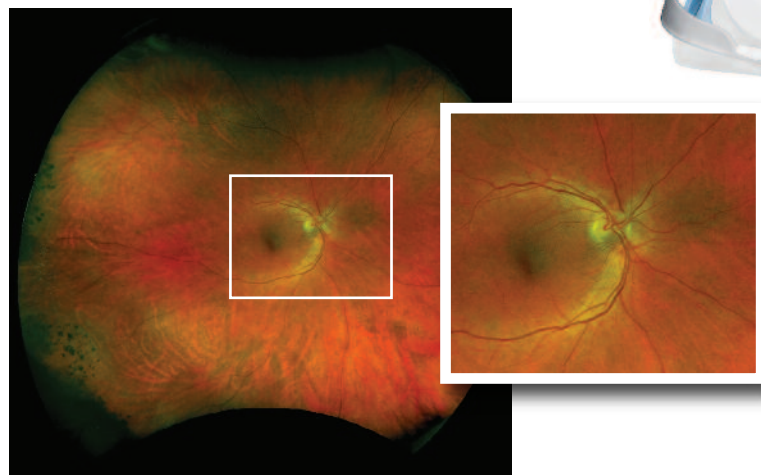
Only Optos ultra-widefield (UWF) technology can produce a 200° single-capture retinal image in less than ½ second.

California is available in three models with six imaging modalities to meet the needs and budget of every practice:

- Colour
- Sensory (red-free)
- Choroidal
- Autofluorescence with green laser (*af*)
- Fluorescein angiography (*fa*)
- ICG angiography (*icg*)

optomap images are presented in a consistent geometry that accurately represents anatomical features across the retina. Automatic image registration enables pixel to pixel comparisons of images across modalities and from visit to visit.

California's innovative optical design provides high resolution images showing fine detail whether viewing the entire retina or zoomed in to inspect macula, optic nerve head, or small pathology.



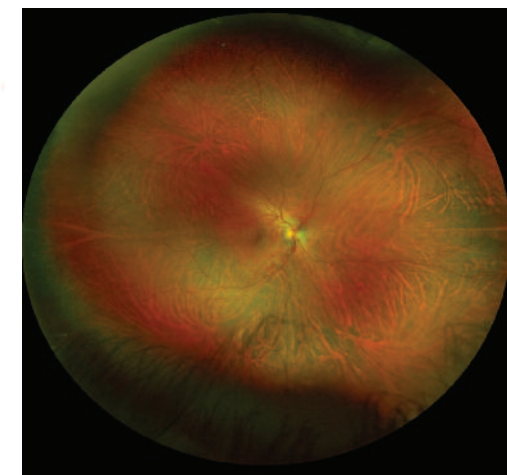
optomap image showing peripheral chorioretinal scars.

California

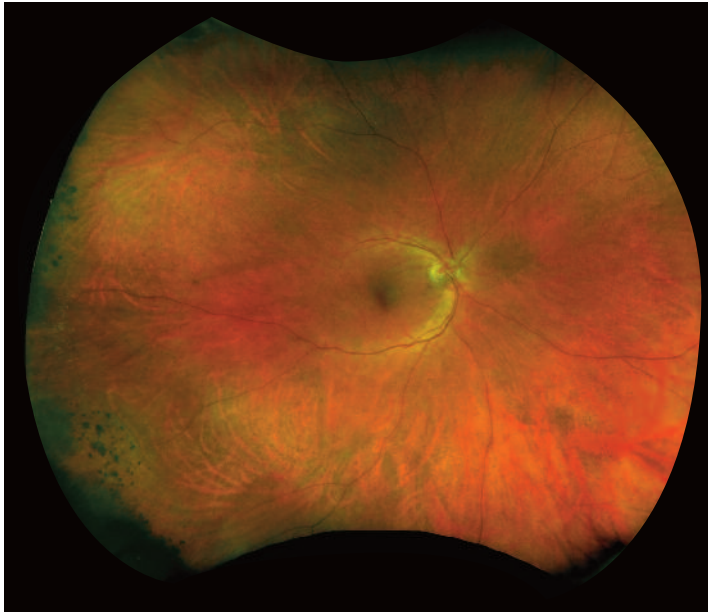


FEATURES AND BENEFITS

- Non-mydratric imaging of the retina in less than ½ second saves time and helps improve clinic flow.
- cSLO technology images through most cataracts and small pupils (2 mm).
- 3-in-1 Colour Depth Imaging™ provides important clinical data from the retinal surface through the choroid.
- Green laser autofluorescence minimises patient exposure to blue light and shows macula and optic nerve head detail.
- Image overlay tool facilitates comparison of images in different image modes and from visit to visit.
- Browser-based image review offers easy, access to data from any connected PC or tablet.
- Distance (mm) and area (mm²) measurements provide objective assessment of change over time.
- Interweaved angiography saves time by enabling capture of *fa* and *icg* in the same session.
- Stereo disc imaging allows assessment of the optic nerve to diagnose and follow the progression of glaucoma.
- Auto-montage combines an **optomap** series into a single image showing up to 220° (97%) of the retina.



Auto-montage image of a healthy retina.



optomap colour

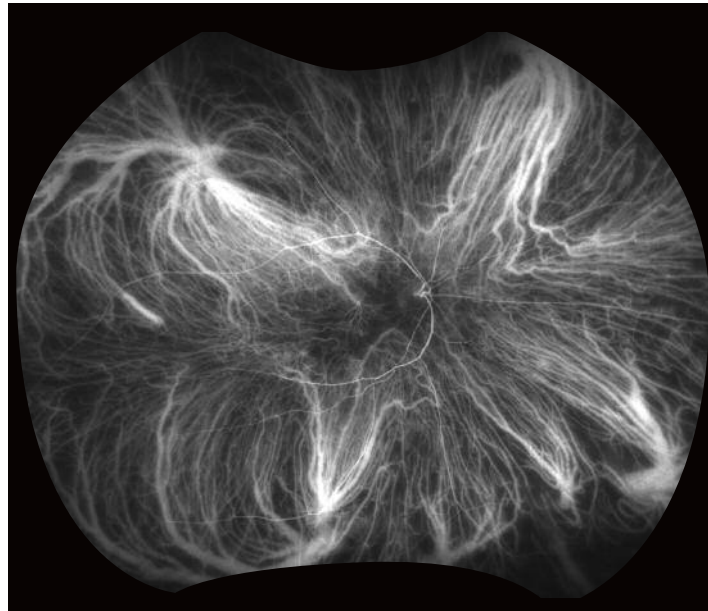


optomap af



optomap fa

Courtesy Prof Paulo Stanga



optomap icg

Courtesy of SriniVas Sadda, MD

*"I rely on **optomap** to diagnose and offer treatment to my patients, both adults and children. The benefit is so great that I now feel uncomfortable looking at 30, 45, or even 50 degree fundus images. Having California, which includes ICG and Fluorescein angiography, as part of our diagnostic armamentarium, allows us to diagnose and treat patients with chorio-retinal diseases more confidently and sometimes even at an earlier stage."*

Prof. Paulo E. Stanga

Consultant Ophthalmologist and Vitreoretinal Surgeon
Manchester Royal Eye Hospital
Manchester, UK

*"**optomap** ultra-widefield imaging has enabled us to better understand disease mechanisms, inform prognosis and stratify risks in retinal diseases. In clinical trials, the patient acceptability of ultra-widefield imaging far exceeds 7-field imaging too."*

Prof Sobha Sivaprasad

Consultant Ophthalmic Surgeon
Moorfields Eye Hospital
London, UK

"Using the California has enhanced the colour, clarity and focus of the whole retinal image such that usually one colour image per eye, in conjunction with an OCT, gives all of the information required to manage diabetic retinopathy and many other retinal conditions."

Mr James Talks

Consultant Ophthalmologist
Newcastle Upon Tyne Hospitals NHS Foundation Trust
Newcastle, UK

TECHNICAL SPECIFICATIONS

TRADE NAME	California		
MODEL NAME	P200DTx <i>af</i> , P200DTx <i>fa</i> , P200DTx <i>icg</i>		
MODEL NUMBER	A10650		
IMAGING MODALITIES	P200DTx <i>af</i>	P200DTx <i>fa</i>	P200DTx <i>icg</i>
Color	X	X	X
Sensory (red-free)	X	X	X
Choroidal	X	X	X
Autofluorescence (<i>af</i>)	X	X	X
Fluorescein Angiography (<i>fa</i>)		X	X
ICG Angiography (<i>icg</i>)			X
COLOURS	White with Blue Trim	White with Grey Trim	White with Aqua Trim
RESOLUTION	optomap: 20 µm optomap <i>plus</i> : 14 µm		
LASER WAVELENGTHS	Red laser: 650 nm Green laser: 532 nm (for <i>af</i>) Blue laser: 488 nm (for <i>fa</i>) Infrared laser: 802 nm (for <i>icg</i>)		
EXPOSURE TIME	Less than 0.4 seconds		
FOOTPRINT	Width: 550 mm / 22 inches Depth: 550 mm / 22 inches including chinrest Height: 608-632 mm / 24-25 inches		
WEIGHT	34 kg / 75 lbs		
TABLE SPACE REQUIREMENTS (not including wheel position)	Width: 887 mm / 34 in Depth: 600 mm / 24 in		
LASER CLASS	Laser safety class-1 following EN60825-1: 2007 and 21 CFR1040.10 and 1040.11		
SYSTEM VOLTAGE	US: 100-120V at 50/60hz, 3A EU/AU: 200-240V at 50/60Hz, 1.5A		
POWER CONSUMPTION	300VA		
COMMUNICATION PROTOCOL	DICOM Compatible		



More than 400 published and ongoing clinical trials as well as thousands of case studies and testimonials show the long-term value of **optomap** imaging in diagnosis, treatment planning and patient engagement.

NOTE: Specifications are subject to change without notice.



Optos plc
Queensferry House
Carnegie Campus
Enterprise Way
Dunfermline, Fife
Scotland KY11 8GR
Tel: +44 (0)1383 843350
ics@optos.com

Optos, Inc.
500 Nickerson Road
Suite 201
Marlborough, MA 01752
USA
Call Toll-free (US & Canada): 800-854-3039
Outside of the US: 508 787 1400
usinfo@optos.com

Optos Australia
10 Myer Court
Beverley
South Australia 5009
Tel: +61 8 8444 6500
auinfo@optos.com

