

# Malignant Choroidal Melanoma and Retinal Detachment

## Retinal Exam Advanced Learning [R.E.A.L.] Images Case Study Program

In an effort to offer continuing education and promote shared learning among our partners, Optos has created the R.E.A.L. Images Program. As part of this effort, we are looking for interesting case studies that demonstrate “real-life” cases where using the **optomap**® Retinal Exam made a difference in a patient’s life.

“ The **optomap**® Retinal Exam is an integral diagnostic tool and would be beneficial to ANY modality of practice. ”



Scott Thiele, O.D.

### Dr. Ted Brink & Associates and Dr. Thiele Case Study

An 8-year-old girl presented with a slight blur in the vision of her right eye, but had no other symptoms. This was her first eye exam and her parents were reluctant to have her eyes dilated.

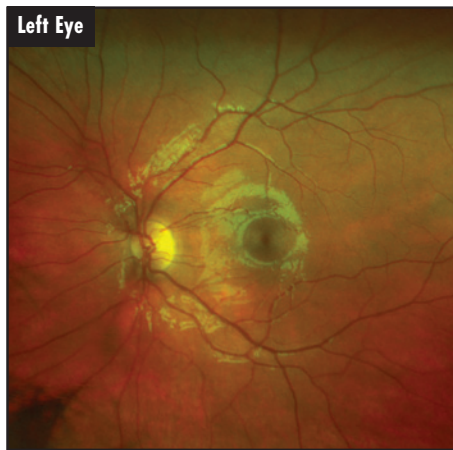
Dr. Thiele ordered an **optomap**® Retinal Exam as part of his protocol for a comprehensive eye exam. He discovered a large retinal detachment; and based on her age and the size of the detachment thought cancer was a possibility. He immediately referred her to Will’s Eye Hospital for further evaluation. The differential diagnosis was a retinal detachment caused by a malignant choroidal melanoma. Unfortunately her eye had to be enucleated to remove the tumor.

### Pertinent History

Initial detection discovered by the **optomap**® Retinal Exam, then confirmed with a dilated exam using a 90 diopter lens and BIO.

### optomap® Impact

The **optomap**® was instrumental in the detection of this detachment and subsequent detection of cancer in an 8-year-old child. This demonstrates the importance of using the **optomap**® on every patient, every year, including children. It is often difficult to do a thorough dilated exam on a child, and the **optomap**® enabled Dr. Thiele to easily and clearly see and identify the detachment and lesion. This allowed for an immediate referral to Will’s Eye Hospital.



Healthy Left Eye



Malignant Choroidal Melanoma and Retinal Detachment in 8-year-old.

### Follow-up Treatment

This patient will continue to be seen twice a year. Specialists are 99% certain that the eye was the primary lesion; however, she will need to be free of any cancer cells for the next 20 years before she is considered to be in full remission.

The patient’s mother credits the **optomap**® Retinal Exam for discovering the melanoma that may have gone undetected with results that could have been fatal.

### Learn How

For more information on this program and to download the submission form, visit our website at [www.optos.com](http://www.optos.com), sign into the Partner Login area and go to Case Studies. ●