

Lesions Indicate von Hippel Lindau Disease

Retinal Exam Advanced Learning [R.E.A.L.] Images Case Study Program

In an effort to offer continuing education and promote shared learning among our partners, Optos has created the R.E.A.L. Images Program. As part of this effort, we are looking for interesting case studies that demonstrate “real-life” cases where using the **optomap**® Retinal Exam made a difference in a patient’s life.

“ The visual impact of an **optomap**® has made for better patient understanding, stronger compliance, and greater patient retention. ”



Brian Walborn, O.D.

Ossip Optometry & Ophthalmology and Dr. Walborn Case Study

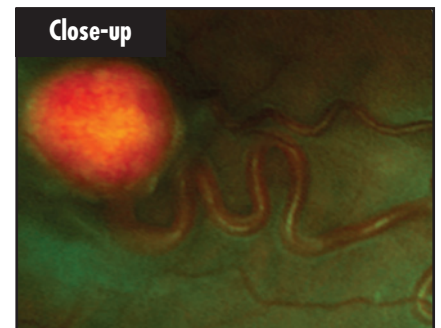
A healthy 15-year-old male presented for routine examination with symptoms of floaters, intermittent headaches while reading, and mildly blurred vision for two months. Dr. Walborn performed an **optomap**® Retinal Exam and then dilated to confirm the observation of three elevated orange-red lesions with enlarged feeder vessels consistent with retinal capillary hemangiomas in the right eye along with subretinal fluid and a circinate ring of hard exudates and edema in the macula. An optic nerve hemangioma was also viewable in the patient’s left eye. As the characteristic lesions and feeder vessels were suggestive of von Hippel Lindau syndrome, both genetic testing and neurological consults were obtained to rule out the disease. Using T1 and T2 weighted MRI, an inferior cerebellar hemangioblastoma was discovered. At the time of imaging, there was no compression from the tumors and the presence of the relatively small intracranial lesion confirmed a diagnosis of von Hippel Lindau disease.

Pertinent History

The patient’s past medical and family histories were unremarkable for von Hippel Lindau disease. VHL is a disease with systemic implications including brain, spinal, and abdomen tumors which if left undiagnosed may be fatal. Small retinal capillary clusters are often overlooked until feeder vessels develop. In this patient, these lesions were causing fluid to pool around the macula resulting in decreased and distorted vision, but unnoticed



Retinal capillary hemangioma with macular hard exudates.



Characteristic lesion suggestive of von Hippel Lindau disease.

by the patient himself. The patient’s eye at time of diagnosis was at risk for nonrhegmatogenous retinal detachment and vitreous hemorrhage.

optomap® Impact

The **optomap**® Retinal Exam allowed for an immediate visual assessment as to the extent of macular involvement and number of lesions in the retina. The **optomap**® images provided useful information as to the extent of retinal infiltration and served as a basis in treatment selection involving both laser and cryotherapy. The patient underwent successful photocoagulation and cryotherapy on all lesions with an improvement in acuity to 20/40 after four weeks. Fortunately, the size of the intracranial lesion was still relatively small and the neurosurgeon elected surgery for removal with good prognosis for a complete recovery.

Follow-up Treatment

This patient will undergo lifelong MRI scans to ensure early detection of recurrent intracranial and systemic lesions. At this time no tumors have been found in his family. Genetic testing and counseling were recommended for all family members as VHL may be asymptomatic for decades. Dr. Walborn credits the early detection of these tumors in diagnosing an often complex and multisystemic disease.

Learn How

For more information on this program and to download the submission form, visit our website at www.optos.com, sign into the Partner Login area and go to Case Studies. 🌐