

# Choroidal Melanoma and Non-Rhegmatogenous Retinal Detachment

## Retinal Exam Advanced Learning [R.E.A.L.] Images Case Study Program

In an effort to offer continuing education and promote shared learning among our partners, Optos has created the R.E.A.L. Images Program. As part of this effort, we are looking for interesting case studies that demonstrate “real-life” cases where using the **optomap**® Retinal Exam made a difference in a patient’s life.

“ I think now more than ever, patients are taking greater interest in their eye and overall health. **optomap**® gives us a great educational and diagnostic tool. ”



Cory Lindenman, O.D.

### Winfield Family Optometry and Dr. Cory Lindenman Case Study

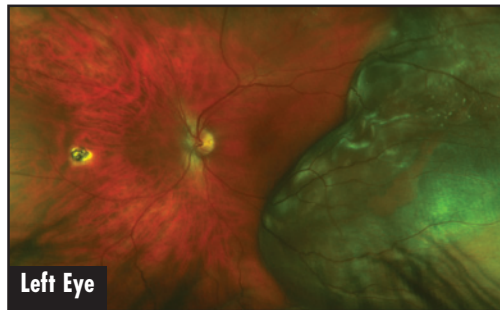
A 42-year-old male presented with complaints that part of his vision was blacked out. He stated that it was “like looking through gas fumes”. The patient also stated that he had become more light sensitive in the last week and was considerably worse in the morning.

### Pertinent History

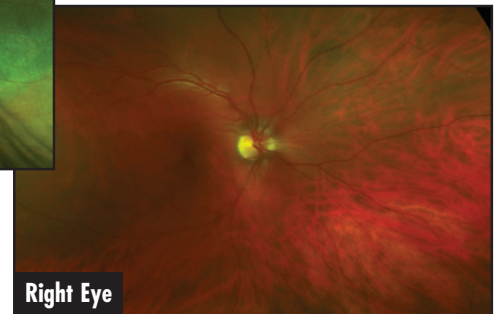
The patient’s visual acuities were 20/20 OD and 20/70- OS corrected with contact lens. He was wearing Biomedic 55 8.6 -6.50 and -7.00. The patient’s brother (deceased) had melanoma lung cancer. The patient was a tobacco user with otherwise unremarkable medical history.

### optomap® Impact

Dr. Lindenman imaged the patient using the **optomap**® Retinal Exam. Upon review of the images the primary diagnosis was a temporal choroidal malignant melanoma with a secondary diagnosis of a non-rhegmatogenous retinal detachment in the left eye. The tumor was 16mm x 15mm x 8.2mm in thickness measured by A-scan. Since the finding of the melanoma several of the patient’s co-workers have had an **optomap**® image taken because they realized the importance of taking care of their eyes. This has been an excellent educational tool for the importance of **optomap**® screening at yearly exams.



Melanoma and Non-Rhegmatogenous Retinal Detachment



Healthy Right Eye

### Follow-up Treatment

The patient was referred to a local retinal specialist for confirmation of melanoma and treatment options. The patient was given the option of plaque radiotherapy, proton beam irradiation, or enucleation. Given the volume of the tumor and proximity of the posterior margin of the tumor to his fovea and optic disc, and the thickness of his tumor the treatment of choice was enucleation. The eye was enucleated and fitted with a prosthetic eye postoperatively. Dr. Lindenman will continue to follow him closely in conjunction with his primary care physician to screen yearly for metastatic disease.

### Learn How

For more information on this program and to download the submission form, visit our website at [www.optos.com](http://www.optos.com), sign into the Partner Login area and go to Case Studies. ☺