

Diabetes Mellitus

Sanjeev Nath, M.D.

Eye Institute and Laser Center
New York, NY

History

The patient was a 55-year-old male with a 9-year history of diabetes. Patient had normal visual acuity.

Examination

In the higher resolution ResMax™ view of the right eye, a number of macular hemorrhages can be seen. These show up particularly well in the green separation view. More dramatic however are the 3 small hemorrhages seen temporally in the far periphery of the same eye in the widefield view provided by the P200°C. Small hemorrhages like these are often missed with indirect examination because of their size and location. They are most likely due to diabetes. It was noted that some of the veins are tortuous.

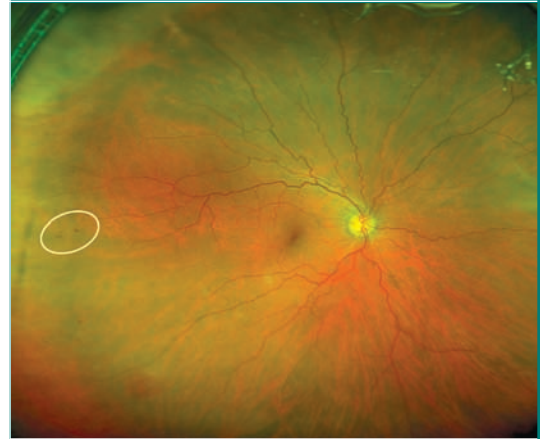
The ability to image (>80 degrees) of the diabetic patient's retina in one image is significant. It is now generally accepted that diabetic retinopathy can occur throughout the retina simultaneously, not just in the central pole, and that it can impact the patient's vision wherever it occurs. We have seen cases where only peripheral hemorrhages (and not posterior pole hemorrhages) have been detected in patients not known to be diabetic but were later diagnosed with diabetes.

Conclusion

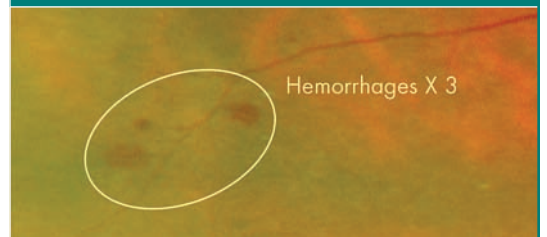
Imaging 200 degrees of the fundus simultaneously allows for detection of lesions in the posterior pole and the mid and far periphery in a very efficient manner. Although most lesions in the posterior pole are detectable with ophthalmoscopy and standard fundus photography, many of the small lesions in the peripheral retina go undetected without the panoramic view provided by Optos imaging technology. Careful follow-up of this and similar patients is indicated.

In our practice it is important that we are able to capture quality images that identify pathology quickly and easily and the P200°C has helped us achieve that.

optomap® plus with P200C



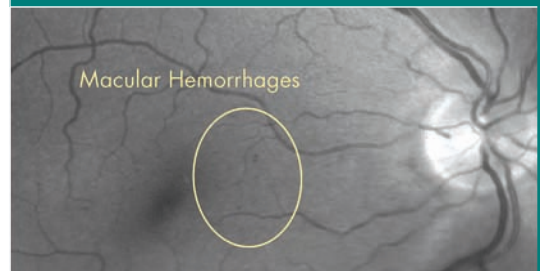
optomap® plus image.



Zoomed view of same optomap® plus image, showing far peripheral hemorrhages.



ResMax™ image showing approximately 100 degree view of central pole.



Zoomed view of same ResMax™ image showing macular hemorrhages.



Optos plc is a leading and rapidly growing medical technology company for the design, development, manufacturing and marketing of devices that image the retina. The Company has gained regulatory clearance (CE and FDA 510(k)) to market its third device - P200°C. The P200°C is aimed at practices looking for advanced clinical capabilities. With a view up to 82% of the retina in a simultaneous, single image, Optos' technology provides an unequalled combination of wide-field retinal imaging, speed and convenience for both practitioner and patient.

WWW.OPTOS.COM