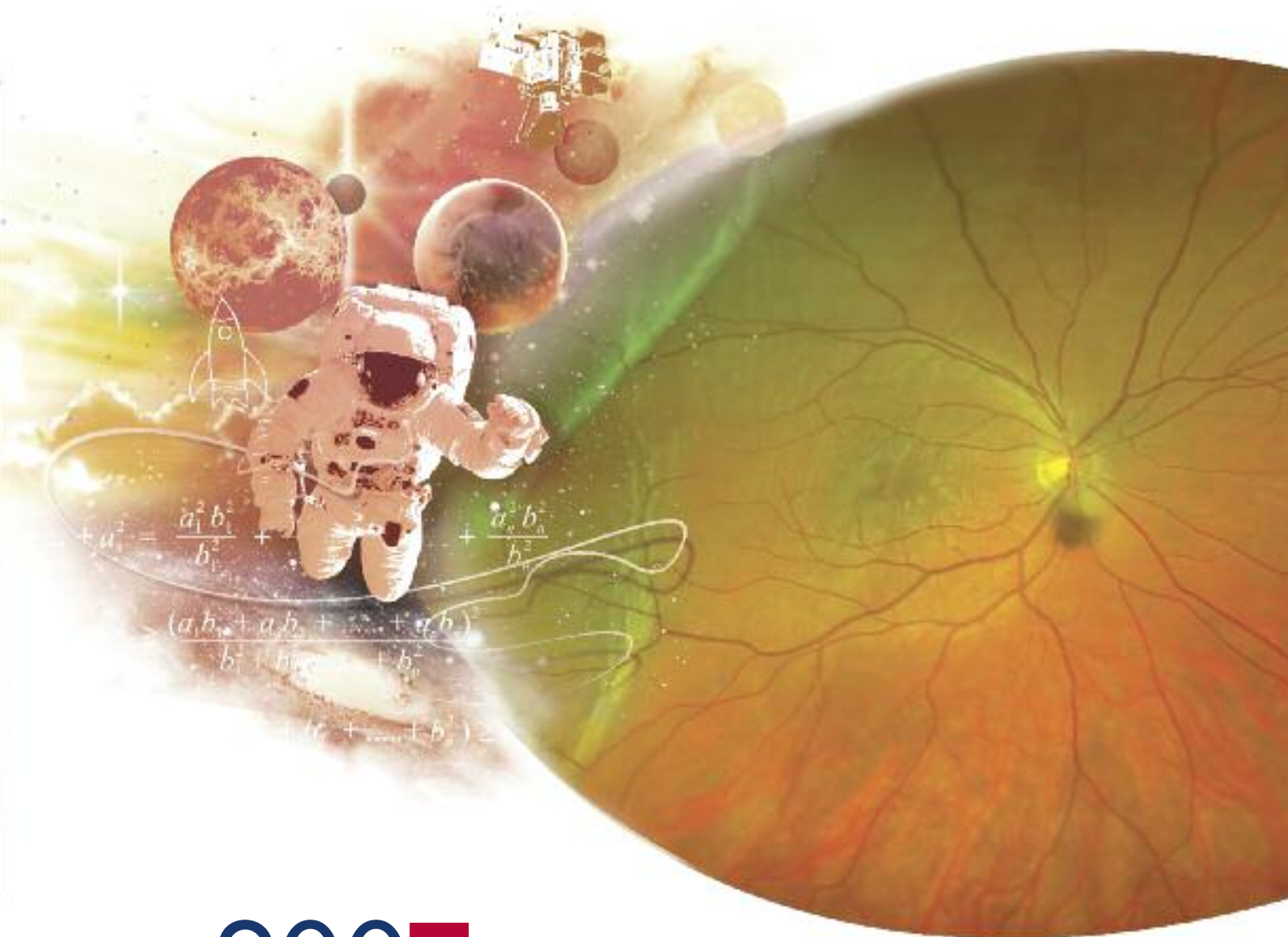


Some of the greatest discoveries
are farther than the eye can see.



200Tx™

ultra-widefield retinal image

Optos introduced ultra-widefield retinal imaging to support practitioners diagnosing, analyzing, documenting and monitoring ocular pathology that may first present in the periphery, and otherwise may go undetected using traditional examination techniques and equipment.

The **200Tx** device, designed specifically for general ophthalmologists and vitreoretinal specialists offers multiple wavelength imaging, including options for color, red-free, fluorescein angiography and autofluorescence. With simultaneous non-contact pole-to-periphery views of more than 80% or 200 degrees of the retina in a single capture, the **200Tx** helps clinicians discover more evidence of disease and guide their treatment decisions.

The **200Tx** is a versatile instrument which allows the practitioner to use ultra-widefield digital retinal imaging with captures such as:

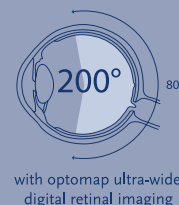
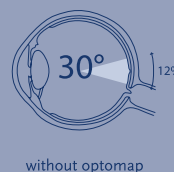
- **optomap®**
- **optomap plus**—supporting enhanced capabilities (eye steering and enhanced annotation tools) for medically necessary reimbursable procedures.
- **optomap fa**—supporting ultra-high resolution, ultra-widefield angiographic retinal analysis captured via a non-contact, non-montage and simplified acquisition process.
- **optomap af**—providing an ultra-widefield retinal autofluorescence image using fundus autofluorescence with a green laser.

200Tx™ ultra-widefield retinal image **Benefits**

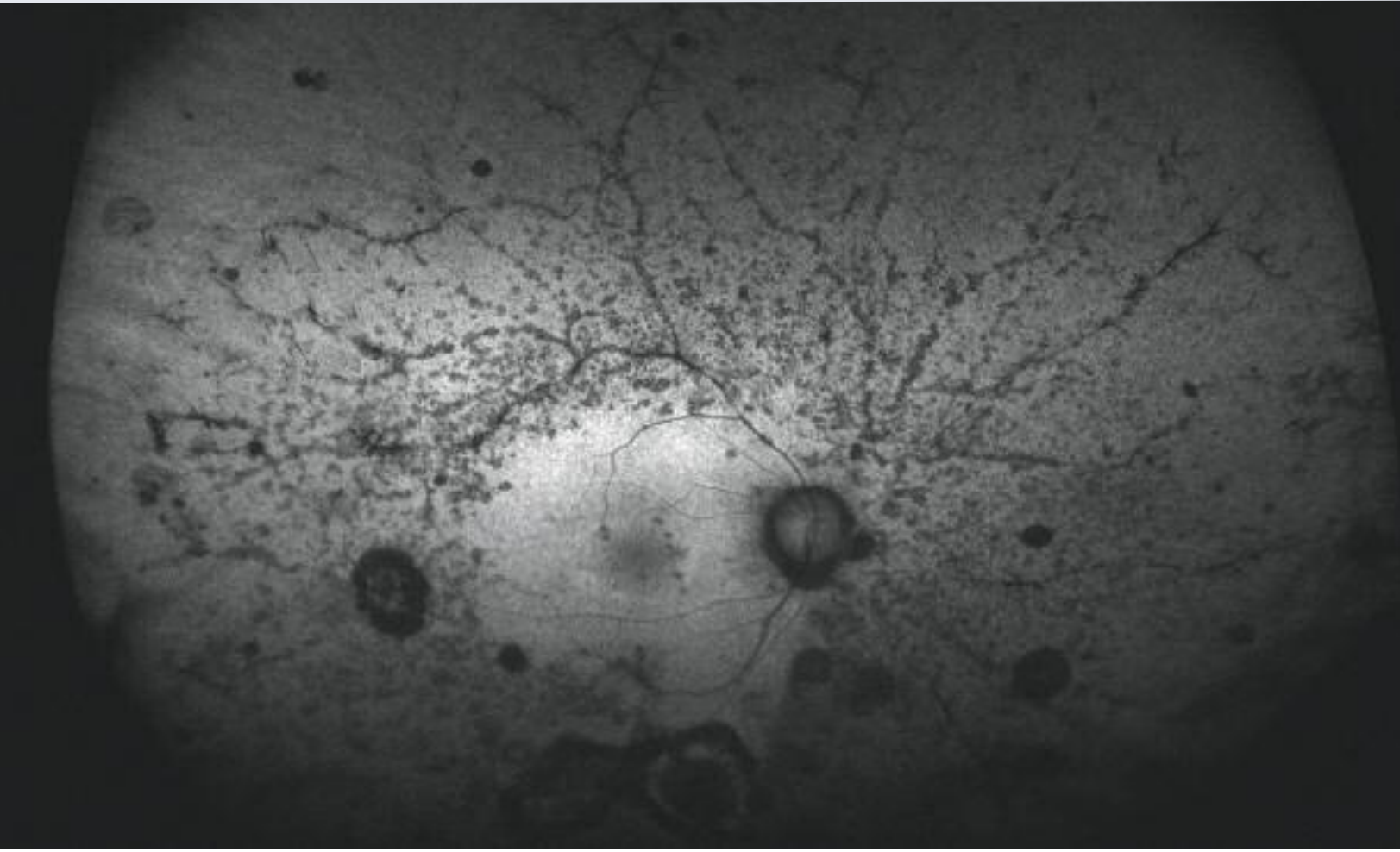
- Ultra-widefield retinal image even through a small pupil
- The first imaging device offering visualization of ultra-widefield autofluorescence RPE changes
- Red, green and blue scanning lasers
- ResMax™ for central pole resolution enhancement
- State of the Art Image and Proprietary V2® Vantage Software
- Customizable to fit your practice needs
- Innovative Virtual Point™ Technology providing a panoramic view of the fundus



Optos is a leading provider of innovative solutions for comprehensive retinal evaluation, enabling practitioners to more effectively detect, monitor and promote patient health.



Some of the greatest discoveries
are farther than the eye can see.



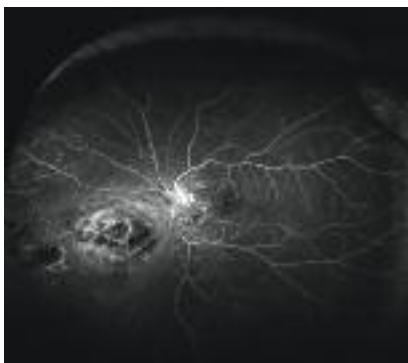
optomap *af*



optomap



optomap *plus*



optomap *fa*



Optos, Inc.
67 Forest Street
Marlborough, MA 01752
USA

800-854-3039
optos.com

Optos is a leading provider of innovative solutions for comprehensive retinal evaluation, enabling practitioners to more effectively detect, monitor and promote patient health.